

# Shoalhaven Orchid Society Inc.



Cymbidium Shoalhaven  
'Touch of Class'

## PATRON

The Hon. Shelley Hancock

## PRESIDENT

Louise Gannon  
[lougannon@bigpond.com](mailto:lougannon@bigpond.com)  
Ph 0419 241 177

## VICE PRESIDENT

Sandra Ellis  
[pollyellis@outlook.com](mailto:pollyellis@outlook.com)

## SECRETARY

Francoise Sikora  
[fsfrancoise@gmail.com](mailto:fsfrancoise@gmail.com)

## TREASURER

Tom Gablonski  
[tom@gablonski.org](mailto:tom@gablonski.org)

## COMMITTEE

John Clancy; John Clarke,  
Ron Findlater; John Harri-  
man; Don Hogan; Val Star-  
ling

## EDITOR

Lynne Phelan  
[phelan.landb@gmail.com](mailto:phelan.landb@gmail.com)

## AFFILIATED WITH

the Australian Orchid Council and the Orchid Society of N.S.W.

[www.shoalhavenorchidsociety.org.au](http://www.shoalhavenorchidsociety.org.au)

Email: [shoalhavenorchidsociety@gmail.com](mailto:shoalhavenorchidsociety@gmail.com)

PO Box 1022 Nowra NSW 2541



Shoalhaven Orchid Society Inc.

## NEWSLETTER MARCH 2022



## SOCIETY INFORMATION

VENUE: BOMADERRY COMMUNITY CENTRE  
19 BIRRILEY STREET, BOMADERRY.

**NEXT MEETING Monday 21 March 7.00pm**

Meeting room is open at 6.30pm  
Benching to be **finished** by 7.00pm.  
Novice Corner 7.00 – 7.15pm  
Popular Vote 7.15 – 7.30pm  
Meeting opens 7.30pm.

## FROM THE EDITOR'S DESK

Hello Members

Do you have webbed feet yet?? It is so wet here that I actually got a leech on my foot 🤢 just crossing from the house to the shade house. Yuk!!

Congratulations to all returning committee members and to new committeeman, John Clarke. **Lynne**



Get well wishes to any member who is currently on the sick list.

## MARCH MEMBERS' ORCHID AUCTION

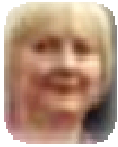
The auction in March will be an opportunity for members to sell some of their spare orchids and we will not have donated bric-a-brac items in the auction. It is an excellent opportunity for members to obtain some new plants that are proven to be happy growing in the Shoalhaven. How does it work?

- Each financial member may enter up to **6 orchids**.
- The plants should contain two (2) labels; one with the name of the plant and the other with the owner's name.
- You can put a reserve price on the plant by putting the word 'Reserve' and the reserve price on the label. If the bidding doesn't reach the reserve you take your plant home.
- A coloured sticker will be placed on the plant to indicate it has a reserve price.
- Have a list of your orchids to give the auctioneer and mark those with a reserve clearly with the reserve price.
- You may wish to include brief information on the plant tag such as e.g. '***This orchid needs a dry rest in winter***', or similar cultural requirements to assist newer members to decide whether they will be able to grow it.
- The Society will take a 10% commission on the sales.
- All plants offered for sale must be disease and pest free, in a good healthy condition and have been repotted for **at least 3 months**.

**There will be no orchid sales on the sales table on auction night.**

THE SHOALHAVEN ORCHID SOCIETY MEETS ON THE **THIRD MONDAY** OF THE MONTH- at **7.00 PM** IN THE BOMADERRY COMMUNITY CENTRE, 19 BIRRILEY STREET, BOMADERRY.

The Shoalhaven Orchid Society disclaims any liability for losses which may be attributed to the use of any of the material mentioned in this newsletter.



## PRESIDENT'S REPORT

Well, what a summer – we haven't had, and now it's the start of autumn with still so much rain and terrible flooding along the east

coast.

At our February AGM, I was pleased to see all our 2021 Committee return, plus our very welcome new committee member, John Clarke. This brings our committee number to ten with two vacant positions. I look forward to another year of working together.

Congratulations once again to Brian Phelan for being awarded Life Membership of our Society. It was a unanimous secret vote by members who recognised the good work that Brian has done over many years.

Feedback from members regarding the new benching card system was very favourable. Please ask Don, or a senior member if you are unsure of where to place your orchids or how to fill in your card.

Just a reminder that we need to fill our Newsletter Editor's position. Any member who may be interested, please speak to Lynne.

There has been a good response to the 2 Growing Comp. seedlings on offer – a native for \$5 and the other, a lovely cattleya cross, which is free to members. This plant will be grown in memory of our late member, Phil Harrington. There are still seedlings left of both orchids.

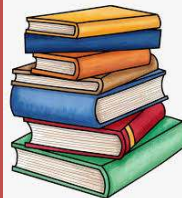
Our diary for this year is coming together well with most months' meetings having Guest Speakers, Auctions, etc. A Roving Day has been planned for Saturday, May 21<sup>st</sup>, starting at the Phelan's home, (Woollamia) then progress to John Harriman's place (Old Erowal Bay) and finally to John Clancy's (Vincentia). A BBQ lunch in the park opposite John's house has been planned. Thank you to our three members for opening up your growing areas for us to see how you grow your orchids. A native bush walk (Sept. 24<sup>th</sup>), a Potting Day (Oct. 15<sup>th</sup>) and hopefully a bus trip can be organised, as well.

Stay safe, and I look forward to seeing you at our next meeting.

Warm regards,  
**Louise**

## Current Life Members Shoalhaven Orchid Society

*Mr Stuart Crowther - 1999*  
*Mr Alan Stephenson - 1999*  
*Mr Colin Marstin - 2007*  
*Mr John Webb - 2009*  
*Mrs Lynne Phelan - 2012*  
*Mr Allan Taylor - 2014*  
*Mr Brian Phelan - 2022*



### Books! Books! Books!

**Our society has many great books for you to borrow!!**

**Speak to Robin Gunter who would be delighted to help you**

### Attendance Book

Members and guests must sign the attendance book. This is required for insurance purposes.

***If you don't sign, you're not covered.***

Please sign beside your number given by the society.

### Workshop Novices Corner

**Between 7pm and 7.15pm** newer growers can speak to experienced grower. **March: *Choosing the right pot for different orchid genera.***

Do you have a problem orchid for which you would like some advice? (Please bring it in plastic bag if you suspect it has a disease or pest problem.) Remember, there's no such thing as a 'dumb orchid question'!



### WISH LIST

Looking for a special plant??

**Email Lynne** (front page for address) with ....

**Your Name, Phone number & plant name**

and I will add it to our newsletter.

**See Back Page for your Wishes...**

### IMPORTANT NOTICE

**about your Bishop's discount card**

**A new discount card will be issued when you renew your membership. Please bring your old card to the meeting to exchange for the new card. Treasurer Tom has the new cards.**

**REPRINT OF THE FIFTY GOLDEN YEARS  
1956 – 2006 BOOK**  
by Alan Stephenson  
With updates: 2007 – 2021  
by Lynne Phelan  
Some copies are still available  
for \$15. Please see Tom for purchase.



*The Society thanks our generous  
Sponsors*

*We encourage you to support them.*



**NOVICE CORNER** Committee member, **John Clancy**, is the co-ordinator and members who have a cultural problem or any questions about their orchids are invited to speak to John during Novice Corner. If it is not within John's area he will refer you to another grower who may be able to help. If there is a particular topic you would like to have covered in Novice Corner please feel free to contact John on 44439072 or email [john.clancy50@me.com](mailto:john.clancy50@me.com).



WE STOCK AN EXTENSIVE PRODUCT RANGE FOR ALL YOUR ORCHID NEEDS

- ♂ Campbell's Orchid Fertilizer
- ♂ Clear Phalaenopsis Pots
- ♂ White and Coloured Labels
- ♂ Range of Orchid Growing Media... AND MORE!

Take advantage of your VIP Customer Pricing  
PHONE FOR DELIVERY OR VISIT US AT 21 BELLEVUE ST, SOUTH NOWRA

Ph: 4423 2359 Fax: 4423 7180

**COVID RESTRICTIONS**

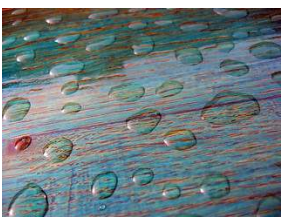
**Please observe the following:**

- 1. Sanitise your hands with the hand sanitiser provided when you arrive.**
- 2. Wearing a mask is optional.**
- 3. If you are unwell, please do not attend.**

**ORCHID VIRUS TEST KITS**

See Ron Findlater if you are interested in sharing the cost of purchasing some home test kits for virus as they are cheaper if bought in bulk.

**BY-LAWS** A copy of the recently updated By-laws is attached for your information.





**REMINDER**  
Please **do not** water your orchids on meeting/show day to avoid the mess.



**SHOALHAVEN  
ZOO**

**EDITOR WANTED** Please talk to Lynne if you would like to learn how to produce our newsletter. All the content is provided and you do not need to circulate the newsletter, just put the news, reports, results and photos together. Ph. 44478280. Email [phelan.landb@gmail.com](mailto:phelan.landb@gmail.com)



110 SHOP 6 KALANDAR ST EAST NOWRA NSW 2541  
PH 02 44223438 FAX 02 44223669



Rewarding experience

## Benching Results - February 2022

Category	Plant	Owner
<b>JUNIOR</b>		
<b>NOVICE</b>		
Laeliinae Alliance	<i>Lc. Bijou d'Or</i>	T. Gablonski
<b>Novice Orchid of the Night</b>	<b>C. Lady Veitch</b>	<b>T. Gablonski</b>
<b>INTERMEDIATE</b>		
Species orchid	<i>Dendrochilum cobbianum</i>	J. Harriman
Laeliinae Alliance	<i>Catt. Lulu 'Pink Blush'</i>	F. Sikora
Oncidiinae Alliance	<i>Miltonia clowesii</i>	J. Clarke
Miscellaneous	<i>Bulb. Viraphandhu x bicolor</i>	J. Harriman
<b>Intermediate Orchid of the Night</b>	<b>Catt. Lulu 'Pink Blush'</b>	<b>F. Sikora</b>
<b>OPEN</b>		
Paphiopedilum	<i>Paph. Linda Booth 'Jackie'</i>	W. Simmons
Oncidiinae Alliance	<i>Brs. Golden Gamine 'Little Knight'</i>	H&G Douglass
Leliinae Alliance	<i>Catt. Lulu 'Pink Blush'</i>	H&G Douglass
Vandaceous	<i>V. Unknown</i>	G. Jonas
Species	<i>Den. cyanocentrum</i>	R. Korber
<b>Open Orchid of the Night</b>	<b>Den. cyanocentrum</b>	<b>R. Korber</b>
<b>Orchid Species of the Night</b>	<b>Den. cyanocentrum</b>	<b>R. Korber</b>
<b>Orchid Hybrid of the Night</b>	<b>C. Lady Veitch</b>	<b>T. Gablonski</b>

### ORCHIDS IN AUTUMN

March is a month when weather conditions and our cultural procedures start to change. The summer heat is easing, the days are getting shorter and, importantly, the nights are getting cooler. This is often the trigger for many of the most popular genera including cymbidiums, phalaenopsis and some cattleyas to initiate spikes. For these orchids it may be timely to adjust your watering/fertilising regime by cutting back on watering and changing to a blossom booster fertiliser with less nitrogen.

For sarcochilus growers it is a very busy time as this is when your sarcs should be repotted/divided. After the very hot weather is finished, sarcs that have outgrown their pots or those whose media has broken down should be given a fresh start. There is an excellent YouTube with Clive Halls of Mt Beenak Orchids demonstrating how to do it. Just put '*Repotting and Dividing Sarcochilus*' in your search engine. You'll notice Clive is repotting his sarcs when some are in flower but we want to save our flowering sarcs for our October Orchid Show so autumn is our best time for repotting.

For growers who move their orchids outside during the warmer months it is time to prepare their winter quarters. Be sure to check your orchids for any uninvited guests before moving them back into an enclosed growing area to avoid introducing slugs, snails, scale and other nasties which will quickly multiply and spread through the growing area. Check the article on our website for further hints on autumn culture.

# JUDGING RESULTS FOR FEBRUARY 2022

CONGRATULATIONS TO ALL



Orchid Hybrid of the Night  
& Novice Orchid of the Night  
*Catt. Lady Veitch* Tom Gablonski



Orchid Species of the Night  
& Open Orchid of the Night  
*Den. cyanocentrum* Richard Korber



Intermediate Orchid of the Night  
*Catt. Lulu 'Pink Blush'*  
Francoise Sikora



Our scrutineers Richard Korber and Wayne Simmons, counting votes

**HELPERS WANTED** Bunnings Barbeque, Saturday 30 April. If you are available to help please see Captain Sandra Ellis at the March meeting or email [pollyellis@outlook.com](mailto:pollyellis@outlook.com)

*If you can stay calm while all around you is chaos, then you probably haven't completely understood the situation.*

## New Popular Vote System

We commenced our new voting system at the February meeting with members completing a benching card for each orchid benched. There were no teething problems and the judging team found it much easier so, thank you, Members. If you need a new copy of the template for the cards just email Françoise at the society email address. There are copies available at the meeting for those members who do not have a home computer/printer. To avoid benching delays, **please fill in the cards before you come to the meeting.** **Note** – for the Growing Competition there is no need to write the name of the orchid; just put your name on the back. You will still need to have your name on a tag in the pot.

### ZYGOPETALUM AND ALLIED GENERA

As requested, these are the genera and intergeneric names and abbreviations that were mentioned in the Richard Fishlock presentation. Note the full stop required at the end of the abbreviation.

- *Zygopetalum* (Z.)
- *Zygoneria* (Zgn.) = *Zygopetalum* x *Neogardneria*
- *Zygopabstia* (Zba.) = *Zygopetalum* x *Pabstia*
- *Hammelwellsara* (Hmwsa.) = *Aganisia* x *Batemannia* x *Otostylis* x *Zygopetalum* x *Zygosepalum*)
- *Propetalum* (Pptm.) = *Zygopetalum* x *Promenaea*
- *Zygowarrea* (Zwr.) = *Zygopetalum* x *Warrea*
- *Fisherara* (Fsh.) = *Neogardneria* x *Pabstia* x *Promenaea* x *Zygopetalum*
- *Propabstopetalum* (Pbt.) = *Pabstia* x *Promenaea* x *Zygopetalum*
- *Neopabstopetalum* (Npp.) = *Neogardneria* x *Pabstia* x *Zygopetalum*

Some other genera that may be used include: *Anguloa*, *Bollea*, *Cochleanthes*, *Galeottia*, *Pescatorea* and *Stenia*, among others.

Brian Milligan (OSCOV website) lists some other nothogenera\*\* you may find in this group that need the same culture:

- *Monkhouseara* (Mkhsa. = *Aganisia* x *Batemannia* x *Otostylis* x *Pabstia* x *Zygopetalum* x *Zygosepalum*)
- *Masonara* (Msna. = *Aganisia* x *Batemannia* x *Otostylis* x *Pabstia* x *Promenaea* x *Zygopetalum* x *Zygosepalum*)

Other less common members of the Zygopetalum Alliance include:

- *Aitkenara* (Aitk. = *Otostylis* x *Zygopetalum* x *Zygosepalum*)
- *Durutyara* (Dtya. = *Batemannia* x *Otostylis* x *Zygopetalum* x *Zygosepalum*)
- *Galeopetalum* (Gptm. = *Galeottia* x *Zygopetalum*)
- *Phillipsara* (Phill. = *Cochleanthes* x *Stenia* x *Zygopetalum*)
- *Ritterhausenara* (Rthn. = *Pabstia* x *Galeottia* x *Promenaea* x *Zygopetalum*)
- *Zygostylis* (Zsts. = *Otostylis* x *Zygopetalum*).

TRIVIA: *Galeottia* was named after a British thoroughbred racehorse - if Wikipedia can be relied on.

\*\*FACT: **Nothogenera** is the name given to intergenerics that are created by crossing two or more genera.

If you would like a full list of Genera and Intergeneric Hybrids this can be found at: <https://www.rhs.org.uk/plants/pdfs/plant-registration-forms/list-of-orchid-genera-with-components.pdf>

Zygonisia Snow Bird 'Kaila' HCC/AOS (*Aganisia cyanea* x *Zygopetalum Jumpin Jack*)

**Peloric** - an orchid flower displaying a unique structure that clearly strays from the 'normal'. Note the lip colour repeated in the petals.





**OUTGOING 2021 COMMITTEE MEMBERS-L to R-John Clancy, John Harriman, Françoise Sikora, Sandra Ellis, Louise Gannon, Don Hogan, Tom Gablonski, Ron Findlater. Absent - Val Starling.**



President Louise Gannon awarding Brian Phelan Life Membership

**CONGRATULATIONS** to **Brian Phelan** on being awarded Life Membership in recognition of his service to the society over more than 20 years. Brian has been a valued committee member, volunteers for guest speaker roles, including Novice Corner, always assists at orchid shows from judging night through to the finish, is involved in any activity to benefit members and our club including our Bunnings BBQ's, Roving Days, organising the Growing Competition at meetings and much more. He is always approachable and willing to help novice growers. He is a dedicated, passionate orchid grower who is respected by the wider orchid community. The society is very pleased to be able to recognise his contribution.



It looks like the blokes are outnumbering us, Ladies. We'll have to show up in force at the next meeting!



President Louise presents Ron Findlater with the trophy for the 2021 Best Seedling competition.

# 2022 Shoalhaven Orchid Society

## Committee Meetings 2022

1 March, 1.00pm

## Society Meetings 2022

**21<sup>st</sup> March Members' Plant Auction**

**18th April Brian Phelan** Cool growing species including masdavallias & miltoniopsis.

**16th May** Guest speaker **Jan Robinson** on *Some Easy To Grow Orchids*

**Saturday Day Meetings 10am – 1pm**

**18 June** Guest Speaker **Gary Hodder** on Deciduous Dendrobiums

**16 July** TBA

**20 August Mini Charity Auction**

**19th September** Guest speaker **Mitch Kernaghan** on *Australian Native Orchids*

**17 October** Guest Speaker **Gavin Curtis** on *Callista type Dendrobiums*

**21st November** Guest Speaker **David Brooks** on *Cymbidiums*

**19th December** TBA

## Society Shows 2022

SOS Inc. Winter Show Saturday 9th July

SOS Inc. Spring Show Saturday 3rd September

SOS Inc. October Show Saturday 22<sup>nd</sup> October

## Society Coming Events

**Put these on your calendar.**

**Bunnings Barbeque** - Saturday 30 April

**Roving Day** –Saturday 21 May. Visit to see the orchid collections of Brian and Lynne Phelan, John Harriman and John Clancy.

**Native Orchid Walk**– Saturday 24 September.

**Potting Day** - Saturday 15 October at Ron Findlater's home.

**Bus Trips** SOS members will be invited to join any bus trips organised by the Illawarra Orchid Society.

## Other Orchid Events

Collectors Plant Fair April 9<sup>th</sup>-10<sup>th</sup>

Orchids Out West 27<sup>th</sup>- 29<sup>th</sup> May TBC

Mingara Orchid Fair and Show 25<sup>th</sup>- 26<sup>th</sup> June.

St Ives Orchid Fair 19<sup>th</sup> – 21<sup>st</sup> August

Paphiopedilum and Cymbidium Show

12<sup>th</sup>-14<sup>th</sup> August (now at Yagoona)

Australian Native Orchid Show Revesby 11<sup>th</sup> Sept.

## Growing Competition 2022

Please try to find and bring your growing competition plant each month. If you group them with a distinctive coloured label they are easy to find.

**March.** *Den.* Australian Colourfest 'Nutbag' x Stoney Point 'Yum Yum'

**April.** *Rlc.* Dal's Ambition 'Tara' x C. Aloha Case 'Ching Hua'

**May.** *Laelia anceps* 'Wallbrunn' x *L. anceps* 'Rosminah'

**June.** *Den.* Australian Colourfest 'Nutbag' x Stoney Point 'Yum Yum'

**July.** *Rlc.* Dal's Ambition 'Tara' x C. Aloha Case 'Ching Hua'

**August** *Laelia anceps* 'Wallbrunn' x *L. anceps* 'Rosminah'

**September** *Den.* Australian Colourfest 'Nutbag' x Stoney Point 'Yum Yum'

**October.** *Rlc.* Dal's Ambition 'Tara' x C. Aloha Case 'Ching Hua'

**November.** *Laelia anceps* 'Wallbrunn' x *L. anceps* 'Rosminah' **(Last Benching)**

**December.** *Den.* Australian Colourfest 'Nutbag' x Stoney Point 'Yum Yum'

## Other Society Shows

### MUOS

Winter Show 2<sup>nd</sup>-3<sup>rd</sup> July

Spring Show 10<sup>th</sup>-11<sup>th</sup> September

October Show 8<sup>th</sup> October

### BBOFS

Winter Show 16<sup>th</sup> -17<sup>th</sup> July

Spring Show 3<sup>rd</sup>-4<sup>th</sup> September

October Show 22<sup>nd</sup>-23<sup>rd</sup> October

### EOC

Winter Show 8<sup>th</sup>-9<sup>th</sup> July

Spring Show 27<sup>th</sup> -28<sup>th</sup> August

### IDOS

Winter Show 2<sup>nd</sup>-3<sup>rd</sup> July

Spring Show 3<sup>rd</sup> -4<sup>th</sup> September



*Psychopsis Menden Hall 'Hildas' FCC/AOS*