

Shoalhaven Orchid Society Inc.

PATRON

The Hon. Shelley Hancock

PRESIDENT

Louise Gannon

lougannon@bigpond.com

Ph 0419 241 177

VICE PRESIDENT

Sandra Ellis

pollyellis@outlook.com

SECRETARY

Francoise Sikora

fsfrancoise@gmail.com

TREASURER

Tom Gablonski

tom@gablonski.org

COMMITTEE

John Clancy; John Clarke, Ron Findlater; John Harriman; Don Hogan; Val Starling

EDITOR

Lynne Phelan

phelan.landb@gmail.com

AFFILIATED WITH

the Australian Orchid Council and the Orchid Society of N.S.W.

www.shoalhavenorchidsociety.org.au

Email: shoalhavenorchidsociety@gmail.com

PO Box 1022 Nowra NSW 2541



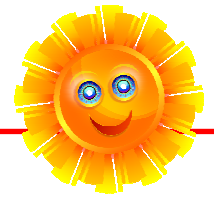
Shoalhaven Orchid Society Inc.



Cymbidium Shoalhaven

'Touch of Class'

NEWSLETTER JULY 2022



REMEMBER,

THIS IS A DAYTIME MEETING. SEE YOU ON SATURDAY, 16 JULY.

SOCIETY INFORMATION

VENUE: BOMADERRY COMMUNITY CENTRE
19 BIRRILEY STREET, BOMADERRY.

NEXT MEETING Saturday 16 July

Meeting room is open at 9:15am for setting up *

Benching to be **finished** by 10:00am

Novice Corner 10:00am - 10:15am

Popular Vote 10:15am-10:30am

Meeting commences 10:30am

* Many hands make for a quick set up/pack up.

GUEST SPEAKER - Gary Hodder on Deciduous Dendrobiums. Gary is a member of the Sutherland Shire Orchid Society and has visited us before to talk on South East Asian Dendrobiums. Gary's talk this time will be on deciduous Dendrobiums. Gary is a keen photographer and I am sure all the photos in his presentation will be outstanding.

FROM THE EDITOR'S DESK

Hello Everyone

By the time you receive this we will hopefully have had our first show in two years. I hope you had some show bench success.

I enjoyed our first day meeting and it was very pleasing to catch up with some members who are unable to attend our night meetings. It was also very pleasant not to have to drive home on a cold, winter night. Lynne

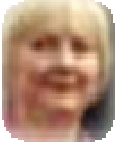


NOVICE CORNER Committee member, **John Clancy**, is the co-ordinator and members who have a cultural problem or any questions about their orchids are invited to speak to John during Novice Corner. If it is not within John's area he will refer you to another grower who may be able to help. If there is a particular topic you would like to have covered in Novice Corner please feel free to contact John on 44439072 or email john.clancy50@me.com.

THE SHOALHAVEN ORCHID SOCIETY MEETS ON THE **THIRD SATURDAY** OF THE MONTH- at **10.00 AM** IN THE BOMADERRY COMMUNITY CENTRE, 19 BIRRILEY STREET, BOMADERRY.

The Shoalhaven Orchid Society disclaims any liability for losses which may be attributed to the use of any of the material mentioned in this newsletter.

PRESIDENT'S REPORT



I am writing my report four days before our Winter Show. All the pre-show work has been diligently completed by Committee and members. I am sure some of us felt a bit rusty after not having a show for two years but we soon got back into the swing of it. All members will now be looking forward to benching their flowering orchids in our friendly show competition.

The weather has been very unkind lately with long wet rainy days which create problems not only for us but for our orchids, by keeping them constantly wet. The temperature has also been too cold, preventing the buds from opening.

Thank you to two of our sponsors – Bunnings and Shoalhaven Zoo - for their continued support in donating some of the prizes in our show raffle.

Congratulations to Sandra Ellis who won Champion Orchid of the Show at the Milton/Ulladulla Orchid Society show recently with her *Paph. insigne* which gets bigger and better each year. I wonder if we will see it at our Winter Show?

Last month's Saturday day meeting went well although member numbers were down to 20 plus 4 visitors. Richard Dimon's talk on endangered Australian native orchids was enjoyable. Who would have thought that a number of the orchids needed a particular fungus around the roots to grow?

Best wishes to John Clancy who had a health scare recently. Hope it is not too long before we see you again at our meetings.

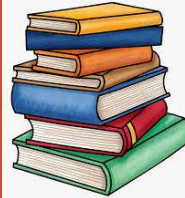
Next meeting we will have Gary Hodder giving us a talk on deciduous dendrobiums.

Warm regards,
Louise



Current Life Members Shoalhaven Orchid Society

Mr Stuart Crowther - 1999
Mr Alan Stephenson - 1999
Mr Colin Marstin - 2007
Mr John Webb - 2009
Mrs Lynne Phelan - 2012
Mr Allan Taylor - 2014
Mr Brian Phelan - 2022



Books! Books! Books!

Our society has many great books for you to borrow!!

Speak to Robin Gunter who would be delighted to help you

Attendance Book

Members and guests must sign the attendance book. This is required for insurance purposes.

If you don't sign, you're not covered.

Please sign beside your number given by the society.

Workshop Novice Corner

Between 10.00am and 10.15am newer growers can speak to experienced grower. **JULY: This will be a Q&A session so come along and ask your orchid-related questions.**

Any problem orchid for advice on? (Please bring it in plastic bag if you suspect it has a disease or pest problem.) Remember, there's no such thing as a 'dumb orchid question'!

IMPORTANT NOTICE

As part of your membership you will receive a discount card for the purchase of orchid related items at Bishops, South Nowra. Members are encouraged to support all of our generous sponsors whenever possible.

VALE - TONY GROUBE

Tony was President of Eurobodalla Orchid Club and heavily involved in the South and West Region interclub activities. Sadly, Tony passed away on 24 July, 2022. He was a much admired and valued member of the orchid fraternity and a generous friend to many. He will be greatly missed. Sincere condolences to Liz and family.



Yvonne and Sandra selling raffle tickets and advertising the show at Bunnings. Who could resist those happy, smiling faces.

WINTER ORCHID CARE

I'm sure many members are over this cold, over-cast weather and its impact on our orchids. I've found that my watering regime has been dramatically reduced to about once a fortnight.

Things to be on the look out for:

- For orchids grown under cover or indoors keep an eye out for scale/mites as they thrive in dry conditions.
- For orchids that come from a monsoonal climate (wet season - dry season) this will be a resting time so keep them dry as they are not growing and don't need water and certainly not fertiliser. Just an occasional mist is usually sufficient.
- All the wet weather makes for ideal conditions for slimy pests so keep an eye out for slugs and snails. There is nothing worse than coming out one morning and finding your newly opened orchid bloom riddled with holes and covered in slime. I crush snail pellets and sprinkle the powder on top of the media.
- Orchids that flower in Spring (our Spring Show is less than 2 months away!) will have developing racemes so be very careful when moving these plants around and remember to start staking early so that the flowers present the 'right way up' when you bench them. Flowers facing every which-way on an inflorescence are a sure sign that staking was left until the day before the show!

The Society thanks our generous Sponsors

We encourage you to support them.



WE STOCK AN EXTENSIVE PRODUCT RANGE FOR ALL YOUR ORCHID NEEDS

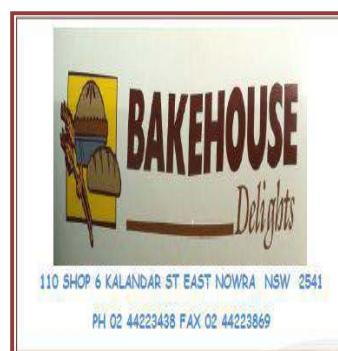
- ✂ Campbell's Orchid Fertilizer
- ✂ Clear Phalaenopsis Pots
- ✂ White and Coloured Labels
- ✂ Range of Orchid Growing Media... AND MORE!

Take advantage of your VIP Customer Pricing
PHONE FOR DELIVERY OR VISIT US AT 21 BELLEVUE ST, SOUTH NOWRA

Ph: 4423 2359 Fax: 4423 7180



SHOALHAVEN
ZOO



Benching Results - JUNE 2022

Category	Plant	Owner
JUNIOR		
NOVICE		
Aust. Native species/ hybrid	<i>Den.</i> Esme Poulton x <i>D. speciosum</i>	T. Gablonski
Novice Orchid of the Night	<i>Den.</i> Esme Poulton x <i>D. speciosum</i>	T. Gablonski
INTERMEDIATE		
Paphiopedilum	<i>Paph.</i> Nitens	R. Hahn
Aust. Native species/ hybrid	<i>Den.</i> Melbourne 'Robbie McInnis' <i>Liparis reflexa</i>	F. Sikora N. Weatherby
Species orchid	<i>Zygo. intermedia</i> <i>Cym. tracyanum</i>	J. Clark N. Weatherby
Oncidiinae Alliance	<i>Onc.</i> Twinkle 'Tsiku'	J. Clark
Laeliinae Alliance	<i>Catt.</i> Little Susie	J. Clark
Cymbidium	<i>Cym.</i> Pharaoh's Dream	J. Clark
Miscellaneous	<i>Masd.</i> Rein Touch	J. Clark
Intermediate Orchid of the Night	<i>Paph.</i> Nitens	R. Hahn
OPEN		
Oncidiinae Alliance	<i>Psychopsis</i> Mendenhall	B. Phelan
Laeliinae Alliance	<i>Lc.</i> Bijou d'Or	L. Gannon
Species	<i>Soph. brevipedunculata</i>	B. Phelan
Aust. Native hybrid	<i>Den.</i> Angellene x Dunokayla	R. Findlater
Cymbidium	<i>Cym.</i> Unknown	G. Jonas
Open Orchid of the Night	<i>Soph. brevipedunculata</i>	B. Phelan
Orchid Species of the Night	<i>Soph. brevipedunculata</i>	B. Phelan
Orchid Hybrid of the Night	<i>Cym.</i> Unknown	G. Jonas
Benching Marshal's Choice	<i>Mediocalcar decoratum</i>	L. Phelan
Growing Competition	1st. J. Clark, 2nd D. Hogan, 1 point each R. Hahn, D. Slye, Y. Young	

Popular Vote Reminder

All plants benched must have a benching card with the name of the orchid on the front and the owner's name on the back. To avoid benching delays, **please fill in the cards before you come to the meeting.** The template or supplies of the benching card are available from Francoise.

Note – for the Growing Competition there is no need to write the name of the orchid; just put your name on the back. You will still need to have your name on a tag in the pot.

JUDGING RESULTS FOR JUNE 2022

CONGRATULATIONS TO ALL



Orchid Hybrid of the Night
Cym. Unknown Gary Jonas



Novice Orchid of the Night
Tom Gablonski



Open Popular Vote and Orchid Species of the Night Catt. (*Sophronitis*) *brevipedunculata* Brian Phelan and Benching Marshal's Choice *Medicalcar decoratum* Lynne Phelan



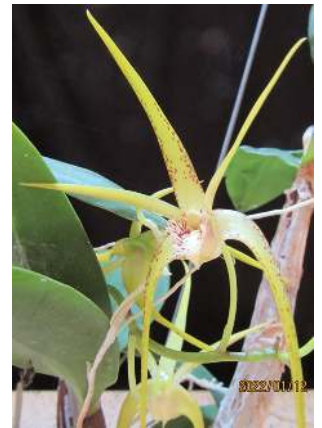
Intermediate Orchid of the Night
Paphiopedilum Nitens
Ross Hahn

SEEDLING ORCHIDS

When you buy a mericloned orchid you know exactly what you are going to see when it flowers as it will be an exact replica of its parent plant. When you buy a seedling orchid you cannot be sure what you will get. You may get a show-stopping prize winner or it could turn out to be a very inferior bloom. At the June meeting Ken Coates bought in two seedlings from the same flask and they are both quite different.



As brothers and sisters can be quite different in appearance so can seedlings from the same seed capsule. Some years ago Neville Roper gave me half a dozen small seedlings of a Hilda Poxon cross he had made. They began flowering last year and each one is different. They put me in mind of my own siblings: one had perfectly clear skin and the rest of us had varying amounts of freckles. I came in with the second most!



Buying seedlings is not necessarily pot luck. Hybridisers choose parents with desirable features to achieve the improvement they are seeking in the progeny; maybe they are trying for extra colour or a better shape or bigger size. The hope is that the seedlings will be at least as good as the parents but some may even turn out to be better- that's the ultimate goal.

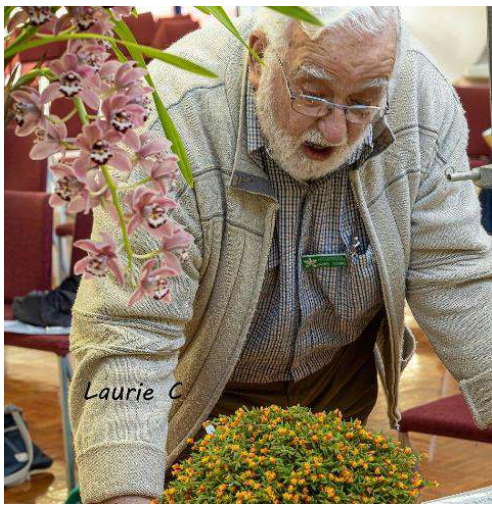
If you buy unflowered seedlings from a reputable, experienced hybridiser you may well end up with a show bench champion. It is a good idea to buy several from the same cross so that you can see how they differ.



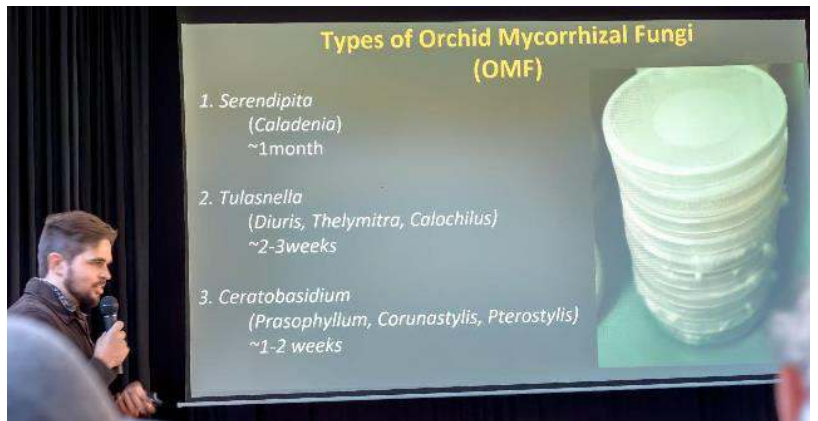
Guest speaker, Richard Dimon, with President Louise.



"It's Supper time, And the choosin' was easy..." Actually, it was yummy morning tea time.



So, Lawrie, how many flowers are on Lynne's *Mediocalcar decoratum*?



Richard's excellent talk wasn't as technical or esoteric as this slide suggests. We all came away with a much better understanding of how some of our endangered orchids are being helped to regain viable populations.

Many thanks to Yvonne Young for all of the photos in this newsletter



Louise Gannon benched a lovely cattleya seedling



Congratulations to the 5 members who remembered to bring their growing competition plant. The rest of us, Editor included, can do better!



Brian Phelan's *Psychopsis Mendenhall* attracted a lot of attention

2022 Shoalhaven Orchid Society

Committee Meetings 2022

1 August, 1.00pm

Society Meetings 2022

16th July Guest Speaker **Gary Hodder** on
Deciduous Dendrobiums

20th August **Mini Charity Auction**

19th September Guest speaker **Mitch Kernaghan**
on Australian Native Orchids

17th October **Gavin Curtis** on Callista Den-
drobiums

21st November Guest speaker **David Brooks** on
Cymbidiums

19th December TBA

Society Shows 2022

SOS Inc. Spring Show Saturday 3rd September

SOS Inc. October Show Saturday 22nd October

Society Coming Events

Roving Day –TBA

Native Orchid Walk - September 24th

Potting Day – October 15th

Other Orchid Events

Bateman's Bay Orchid and Foliage Society Winter
Show July 15-17 BB Soldiers Club.

St Ives Orchid Fair 19th - 21st August

Paphiopedilum and Cymbidium Show 12th– 14th
August (now at Yagoona)

MUOS Spring Show Sept. 10-11. Civic Centre

Australian Native Orchid Show Revesby
11th Sept.

MUOS Native Show 8 October, Civic Centre

Southern Orchid Spectacular Oct. 7-9, Sutherland.

You may also be interested in...

Berry Garden Club Camellia and Floral Show, Berry
School of Arts, July 30-31

Berry Gardens Festival, October 13-16. See web-
site for gardens and further details as they become
available.

Growing Competition 2022

Please try to find and bring your growing compe-
tition plant each month. If you group them with
a distinctive coloured label they are easy to find.

July. *Rlc. Dal's Ambition 'Tara' x C. Aloha Case*
'Ching Hua'

August *Laelia anceps 'Wallbrunn' x L. anceps*
'Rosminah'

September *Den. Australian Colourfest 'Nutbag' x*
Stoney Point 'Yum Yum'

October. *Rlc. Dal's Ambition 'Tara' x C. Aloha*
Case 'Ching Hua'

November. *Laelia anceps 'Wallbrunn' x L. an-*
ceps 'Rosminah' **(Last Benching)**

December. *Den. Australian Colourfest 'Nutbag'*
x Stoney Point 'Yum Yum'



Louise Gannon's lovely *Lc. Bijou d'Or*

COVID RESTRICTIONS

If you have had recent exposure to COVID-19, have any symptoms that may be COVID -19, no matter how mild , please do not attend the meeting.

Social distancing is still a very important part of staying safe...please be responsible and aware to ensure safety for all.

Masks are no longer mandatory but are strongly recommended for members who feel the need for them. Hand sanitiser will be available.

Morning tea will be served, not 'help yourself'.